



8th Floor, 111 Paseo de Roxas
Cor. Legaspi St., Legaspi Village,
Makati City
Telephone: + 632 892 0722
Fax: + 632 892 0788
E-Mail: emsphils@pltdsl.net

April 5, 2005

LAGOON DEVELOPMENT CORP.

Pavilion Mall, Binan , Laguna

Attention: Justinn Valerio
Facilities Manager

Subject : EMS Envirostart Testing on Air Handling Unit No. 513

Dear Sir:

This report summarizes the results of the testing as well as data gathered with corresponding analysis on the Air Handling Unit (AHU) No. 513 fitted with an Envirostart Motor Energy Control. Here are the list of equipment used for the test:

Air Handling Unit (AHU) No. 513; Rated 10 HP (7.5kW)
Envirostart Model No. 400-TPMEC-15kW
EIG Multi-Function Power Monitor Model No. DMMS 300+
Nexus Communicator Software
Toshiba Laptop Computer

Methodology:

1. The AHU was started at 11:40 AM , and allowed to run for 10 minutes to normalize the load. Measurements were started at 11:50 AM with the Envirostart unit in Optimization Mode and the measurements of KW, KWH and P.F. were taken every 10 minutes perhour.
2. Energy control settings at Maximum, continued measurements for one hour (2nd .
3. Energy control settings at Minimum, continued measurements for one hour (3rd).
4. Envirostart in By-Pass mode, continued measurements for 3 hours. (4th-6th).
5. At 6:00 PM ,End of testing

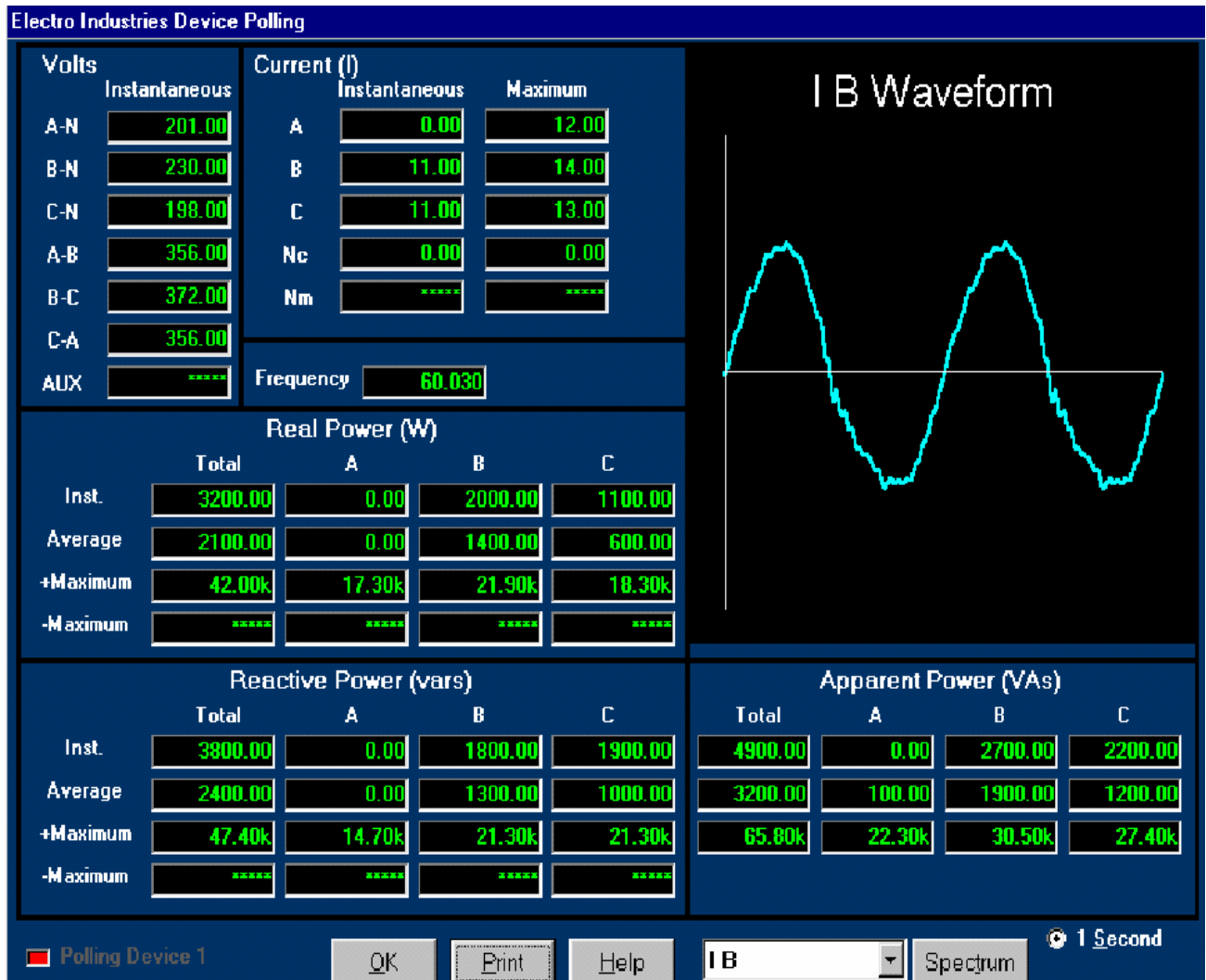
Meter Data
Pavilion Mall
Load Profile
With Envirostart
04 April 2005

Motor : AHU 10 HP 7.5KW
513

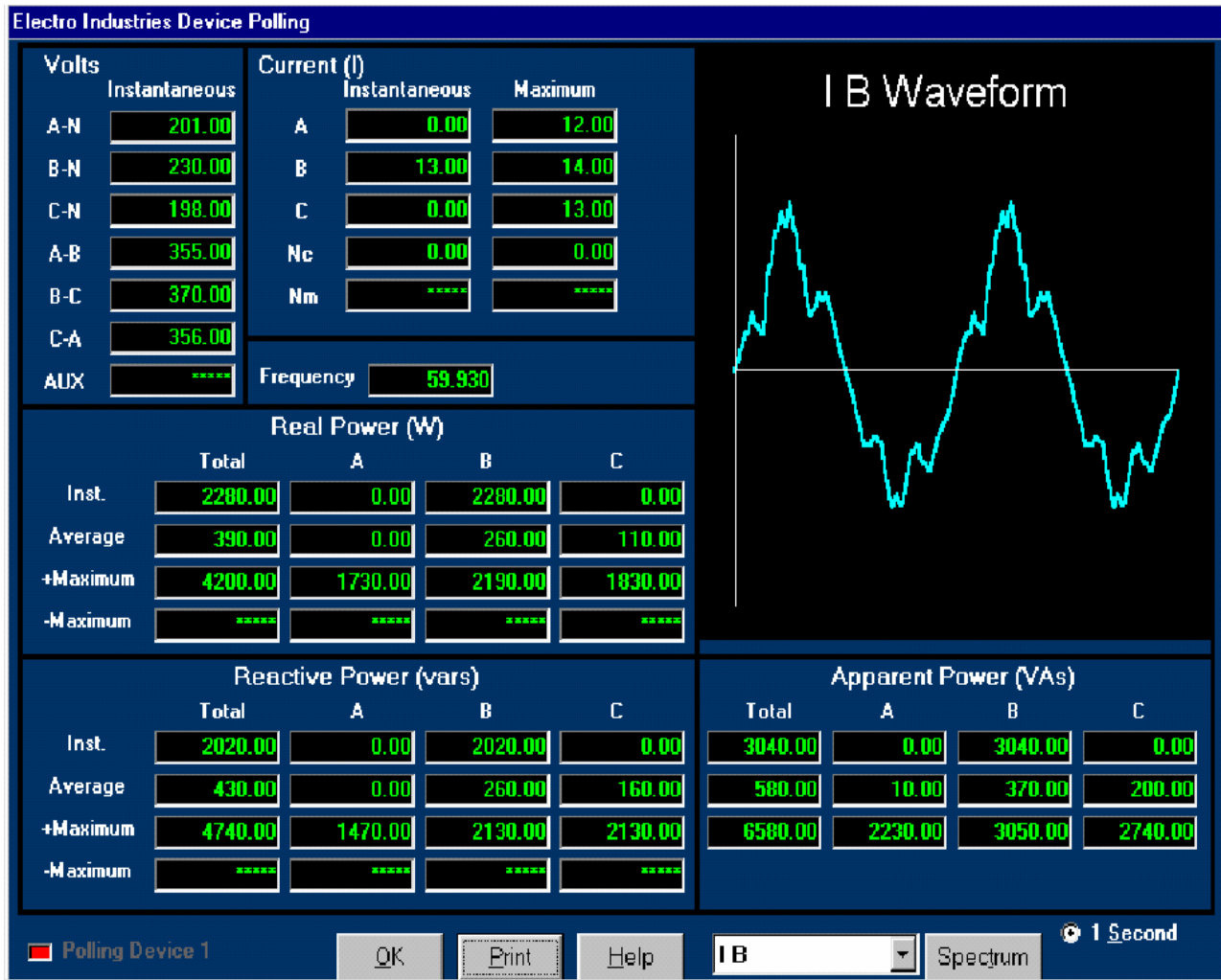
Technicians :
Gerry/Rommel

Time	KwHr Reading	KW	PF	notes	KwHrs Consumed	
11:50 AM	0	3.06	0.662	Default		
12:00 NN	0.576	3.33	0.688		0.576	
12:10 PM	1.06	3.15	0.589		0.484	
12:20 PM	1.544	3.21	0.649		0.484	
12:30 PM	2.052	3.2	0.64		0.508	
12:40 PM	2.651	4.55	0.736	MAX setting	0.599	
12:50 PM	3.002	2.91	0.78		0.351	3.002 Total kWhr 1 st Hour
1:00 PM	3.432	3.05	0.673		0.43	
1:10 PM	3.827	3.09	0.655		0.395	
1:20 PM	4.521	3.51	0.686		0.694	
1:30 PM	4.8	2.11	0.686		0.279	
1:40 PM	5.267	2.22	0.752		0.467	
1:50 PM	5.75	3.11	0.633		0.483	2.748 Total, 2 nd Hour
2:00 PM	6.21	3.11	0.638	MIN. Settings	0.46	
2:10 PM	6.705	3.03	0.63		0.495	
2:20 PM	7.152	3.19	0.63		0.447	
2:30 PM	7.618	2.22	0.738		0.466	
2:40 PM	8.096	3.03	0.638		0.478	
2:50 PM	8.571	3.3	0.698		0.475	2.821 Total, 3 rd Hour 8.571 kWhrs.
<hr/>						
3:00 PM	8.947	3.1	0.64	By-Pass	0.376	Start w/o EMS
3:10 PM	9.487	3.2	0.638		0.54	
3:20 PM	9.997	3.1	0.641		0.51	
3:30 PM	10.505	3.1	0.636		0.508	
3:40 PM	11.027	3.3	0.646		0.522	
3:50 PM	11.568	3.3	0.645		0.541	
4:00 PM	12.161	3.2	0.632		0.593	3.214 Total, 4 th Hour
4:10 PM	12.571	3.1	0.627		0.41	
4:20 PM	13.079	3.2	0.628		0.508	
4:30 PM	13.636	3.3	0.633		0.557	
4:40 PM	14.151	3.2	0.618		0.515	
4:50 PM	14.669	3.2	0.636		0.518	
5:00 PM	15.156	3.1	0.614		0.487	2.995 Total, 5 th Hour
5:10 PM	15.683	3.2	0.62		0.527	
5:20 PM	16.208	3.2	0.611		0.525	
5:30 PM	16.737	3.3	0.627		0.529	
5:40 PM	17.289	3.2	0.619		0.552	
5:50 PM	17.801	3.3	0.631		0.512	
6:00 PM	18.34	3.3	0.634		0.539	3.184 Total, 6 th Hour 9.393 kWhrs.

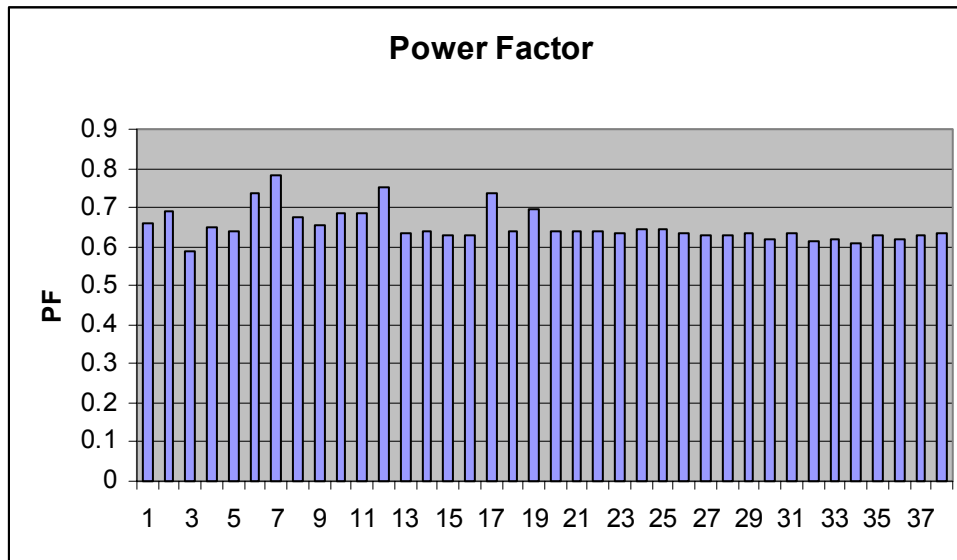
Waveform Capture of Current Waveform Without Envirostart



Waveform Capture of Current With Envirostart



Power Factor Behavior



1-6 : Default Settings

7-12 : Maximum Energy Savings

13-19 : Minimum Energy Savings

20-37 : By-Pass Mode

Energy Savings

Energy Savings = $\frac{\text{Total kWhrs (without EMS)} - \text{Total kWhrs (with EMS)}}{\text{Total kWhrs (without EMS)}} \times 100$

Total kWhrs (without EMS)

$$= 9.393 - 8.571 / 9.393 \times 100$$

$$= 8.75 \%$$

Conclusion:

When fitted with EMS Envirostart, AHU 513 can readily achieve Energy Savings of 8-10%.